

Lessard-Sams Outdoor Heritage Council

Fiscal Year 2017 / ML 2016 Request for Funding



Date: June 04, 2015

Program or Project Title: Martin County/Fox Lake DNR WMA Acquisition

Funds Requested: \$3,372,500

Manager's Name: Doug Hartke

Organization: Fox Lake Conservation League, Inc.

Address: PO Box 212

City: Sherburn, MN 56171

Mobile Number: 507-236-1700

Email: dhartke@frontiernet.net

County Locations: Martin

Regions in which work will take place:

- Prairie

Activity types:

- Restore
- Enhance
- Protect in Fee

Priority resources addressed by activity:

- Wetlands
- Prairie
- Habitat

Abstract:

Core habitat areas, DNR WMAs, were selected to expand enhancement, restoration and acquisition activities. Protecting existing native habitats and planting local source native plant materials will help restore habitat and extend wildlife corridors.

Design and scope of work:

This project is designed to work through the local "Martin County Conservation Alliance," several conservation clubs and their agency partners working together to protect, enhance and restore existing and new lands for wildlife habitat. Alliance partners have coordinated with DNR, Pheasants Forever, Ducks Unlimited and others to prioritize project sites and make sure potential projects are not double listed. The Fox Lake Conservation League has partnered on several projects in the past to restore, enhance and protect hundreds of acres in Martin County and the surrounding area. Several DNR Conservation Partners Legacy Grant projects have been completed, with some still underway. Resource professionals will develop seeding plans and wetland restoration plans to meet the project goals of species diversity. Species of greatest conservation need, listed species, at-risk species and other rare plants and organisms including pollinators will receive the greatest consideration as plans are developed to protect and restore habitat under this proposal. Protection of native habitats and expanding those habitats using seed sources on the parcels and within a few miles will be high priority for the habitat restoration work. Planting the right species in the appropriate positions on the landscape will help with the restoration of habitat that will provide maximum habitat value for the species currently using the existing habitat and those species we will add or attract to the expanded habitat base. Wetland restoration work will be planned and sequenced to minimize impacts to existing habitats, while maximizing the long term habitat benefits. Removal of invasive species and keeping invasive species from becoming established are an important part of the project. Protecting and restoring a diverse range of habitat types and maximizing on the number of species incorporated into each habitat type will help provide resistance to invasion by unwanted non-native species, and will provide the kind of habitat that will attract new species of insects and other organisms that will serve as a food base for several additional species expected to utilize this habitat. Martin SWCD, under a permit through MN DNR, is currently working to establish listed species on more suitable acres in the county. Sullivant's milkweed, Tuberous Indian plantain and Eared false foxglove should find new homes within the newly restored acres under this proposal. Martin SWCD is currently working on habitat improvement within the

Perch Creek WMA, which holds the largest known Blanding's Turtle population in Martin County. Martin SWCD will be a partner in the development of a long range plan to maintain the habitat restored under this proposal. Currently the SWCD offers a Brillion seeder, Truax no-till drill and a Vicon seeder mounted on an ATV help restore habitats. A tractor mounted Bush Hog mower removes trees up to and sometimes over 4" diameter, plus an ATV mounted sprayer helps to maintain habitat plantings from invasive species. Native plant species and more importantly balances of the maximum number of local ecotype native species available will be selected to provide a balanced bloom period throughout the growing season to maximize benefits to pollinators while supplying a balanced natural food source for the indigenous species of wildlife that need those native species to survive and thrive on an expended more diverse landscape.

Crops:

Will there be planting of corn or any crop on OHF land purchased or restored in this program - **Yes**

Explain

The primary purposes of WMAs are to develop and manage for the production of wildlife and for compatible outdoor recreation. To fulfill those goals, the DNR may use limited farming specifically to enhance or benefit the management of state lands for wildlife. This proposal may include initial development plans or restoration plans to utilize farming to prepare previously farmed sites for native plant seeding. This is a standard practice across the Midwest to prepare the seedbed for native seed planting. On a small percentage of WMAs (less than 2.5%), DNR uses farming to provide a winter food source for a variety of wildlife species in agriculture-dominated landscapes largely devoid of winter food sources.

Are any of the crop types planted GMO treated - **Yes**

How does the request address MN habitats that have: historical value to fish and wildlife, wildlife species of greatest conservation need, MN County Biological Survey data, and/or rare, threatened and endangered species inventories:

This request continues the work already underway to restore habitat for wildlife species in greatest conservation need. Partners include DNR Wildlife, DNR Non-game Wildlife and works closely with the DNR Ecologist to assist with habitat restoration decisions to benefit many at-risk species. Utilizing declining, rare and listed plant species in diverse habitat restoration projects, helps to expand the species list for wildlife species that can utilize the resulting diverse high quality habitat. This project will work to protect historical high value fish and wildlife habitats and restore high quality habitat, buffering these areas and providing additional benefits for fish, wildlife, recreation and water quality. This project will continue to partner with agencies to work with MN County Biological Survey data working with rare, threatened and endangered plants to establish populations in new protected locations and to restore habitat suitable for rare fish and wildlife species as well. Under a DNR permit Martin SWCD continues to partner on projects to provide listed plant materials and additional rare local source plant materials for restoration projects on protected lands.

What is the nature of urgency and why it is necessary to spend public money for this work as soon as possible:

Opportunities to acquire high priority lands come up once in a lifetime! As a local conservation club we need to purchase priority projects when they are for sale. If we miss a sale the property will be unavailable for the remainder of the new producer purchaser's lifetime.

Describe the science based planning and evaluation model used:

The parcel selection process utilizes the DNR habitat priority maps as a starting point, looking at parcels adjacent to, or in very close proximity that would compliment existing habitat, provide multiple benefits and result in high quality habitat.

Which sections of the Minnesota Statewide Conservation and Preservation Plan are applicable to this project:

- H3 Improve connectivity and access to recreation
- H5 Restore land, wetlands and wetland-associated watersheds

Which other plans are addressed in this proposal:

- Long Range Duck Recovery Plan
- Minnesota's Wildlife Management Area Acquisition - The Next 50 Years

Which LSOHC section priorities are addressed in this proposal:

Prairie:

- Protect, enhance, or restore existing wetland/upland complexes, or convert agricultural lands to new wetland/upland habitat complexes

Relationship to other funds:

- Environmental and Natural Resource Trust Fund

Funding through the ENRTF has provided the ability to propagate local ecotype native plants and make them available for projects like this one. These plant materials are expected to be available for restoration under the current proposal. ENRTF and Greater Blue Earth Cooperative Weed Management Area are expected to be a part of the work undertaken through this proposal, assisting with invasive weed control and replacing them with local ecotype native vegetation.

How does this proposal accelerate or supplement your current efforts in this area:

Caron WMA #1 is the parcel adjacent to existing Caron WMA. It will be a positive addition to the whole unit, providing much needed upland habitats, nesting and food. Flood plain and pothole wetlands will help add diversity to this large unit. Island WMAs #1, 2 and 3 will add to a significant wildlife corridor currently being expanded on around the lake chain of Pierce, Bright, Clayton, Tuttle and Okamanpeedan. U. S. Fish and Wildlife Service land, Bright Lake County park, several perpetual conservation easements and the Island WMA, a unique oak forest protected from fire by surrounding wetland already protect several parcels. These three project parcels will help protect and broaden the habitat corridor that will extend from Peirce Lake to the Iowa border. The Bright Lake area has a historic past, with stories of magnificent White Tail Bucks being produced and pursued through the swamps and across the lake.

Describe the source and amount of non-OHF money spent for this work in the past:

Not Listed

How will you sustain and/or maintain this work after the Outdoor Heritage Funds are expended:

Local partners will continue to work with the DNR to restore habitat and protect existing habitat. Future maintenance will be the responsibility of the MN Department of Natural Resources under the direction of the Area Wildlife Manager. Martin SWCD and Conservation Alliance partners will be available to assist with special projects when needed to keep the restored/protected habitat healthy.

Explain the things you will do in the future to maintain project outcomes:

Year	Source of Funds	Step 1	Step 2	Step 3
2017 and ongoing	Local Conservation Clubs	Weed Control	Plant local ecotype plants	Followup maintenance, weed control

Activity Details:

If funded, this proposal will meet all applicable criteria set forth in MS 97A.056 - **Yes**

Will local government approval be sought prior to acquisition - **No**

Upon purchase and transfer of the property to the MN DNR, the conservation club will notify the Martin County Commissioner Board.

Is the land you plan to acquire free of any other permanent protection - **Yes**

Is this land currently open for hunting and fishing - **No**

Will the land be open for hunting and fishing after completion - **Yes**

The land will be under MN DNR control as parts of Wildlife Management Areas. It will be their decision to implement any restrictions.

Will restoration and enhancement work follow best management practices including MS 84.973 Pollinator Habitat Program - **Yes**

Is the activity on permanently protected land per 97A.056, subd 13(f), tribal lands, and/or public waters per MS 103G.005, Subd. 15 - **Yes (WMA)**

Accomplishment Timeline:

Activity	Approximate Date Completed
Update appraisals or order new and negotiate selling price	November 30, 2016
Close on property	December 31, 2016
Transfer property to the MN DNR	March 31, 2017
Install local source native plant materials on cropland areas	December 31, 2017
Remove non native perennial vegetation from problem areas	November 1, 2018
Install local ecotype native plant materials on treated areas	March 31, 2019
Follow-up weed control	June 15, 2020
Ongoing maintenance and weed control - assistance with DNR vegetation management.	Ongoing

Federal Funding:

Do you anticipate federal funds as a match for this program - **No**

Outcomes:

Programs in prairie region:

- Protected, restored, and enhanced habitat for migratory and unique Minnesota species *The increased numbers of each species using the habitat and the increased number of species found using the project areas will be used to measure the success of the project. The increased number of local source plant species providing a continuous bloom period from the first Pasque flowers in spring to the final blossoms of the gentians and asters as the killing frost ends the season, providing habitat and food for pollinators as well as food base to provide the diversity needed to support many unique species can be evaluated for improved value and increased use.*

Budget Spreadsheet

Total Amount of Request: \$3,372,500

Budget and Cash Leverage

Budget Name	LSOHC Request	Anticipated Leverage	Leverage Source	Total
Personnel	\$25,000	\$0		\$25,000
Contracts	\$175,000	\$0		\$175,000
Fee Acquisition w/ PILT	\$2,830,000	\$0		\$2,830,000
Fee Acquisition w/o PILT	\$0	\$0		\$0
Easement Acquisition	\$0	\$0		\$0
Easement Stewardship	\$0	\$0		\$0
Travel	\$2,500	\$0		\$2,500
Professional Services	\$75,000	\$0		\$75,000
Direct Support Services	\$0	\$0		\$0
DNR Land Acquisition Costs	\$20,000	\$0		\$20,000
Capital Equipment	\$0	\$0		\$0
Other Equipment/Tools	\$0	\$0		\$0
Supplies/Materials	\$225,000	\$0		\$225,000
DNR IDP	\$20,000	\$0		\$20,000
Total	\$3,372,500	\$0	-	\$3,372,500

Personnel

Position	FTE	Over # of years	LSOHC Request	Anticipated Leverage	Leverage Source	Total
Restoration Technicians, Engineering staff and grant mgt	0.15	2.00	\$25,000	\$0		\$25,000
Total	0.15	2.00	\$25,000	\$0	-	\$25,000

Amount of Request: \$3,372,500

Amount of Leverage: \$0

Leverage as a percent of the Request: 0.00%

Output Tables

Table 1a. Acres by Resource Type

Type	Wetlands	Prairies	Forest	Habitats	Total
Restore	0	0	0	0	0
Protect in Fee with State PILT Liability	62	184	0	165	411
Protect in Fee W/O State PILT Liability	0	0	0	0	0
Protect in Easement	0	0	0	0	0
Enhance	0	0	0	0	0
Total	62	184	0	165	411

Table 1b. How many of these Prairie acres are Native Prairie?

Type	Native Prairie
Restore	0
Protect in Fee with State PILT Liability	84
Protect in Fee W/O State PILT Liability	0
Protect in Easement	0
Enhance	0
Total	84

Table 2. Total Requested Funding by Resource Type

Type	Wetlands	Prairies	Forest	Habitats	Total
Restore	\$150,000	\$205,500	\$0	\$106,000	\$461,500
Protect in Fee with State PILT Liability	\$533,200	\$1,932,300	\$0	\$445,500	\$2,911,000
Protect in Fee W/O State PILT Liability	\$0	\$0	\$0	\$0	\$0
Protect in Easement	\$0	\$0	\$0	\$0	\$0
Enhance	\$0	\$0	\$0	\$0	\$0
Total	\$683,200	\$2,137,800	\$0	\$551,500	\$3,372,500

Table 3. Acres within each Ecological Section

Type	Metro/Urban	Forest/Prairie	SEForest	Prairie	Northern Forest	Total
Restore	0	0	0	0	0	0
Protect in Fee with State PILT Liability	0	0	0	411	0	411
Protect in Fee W/O State PILT Liability	0	0	0	0	0	0
Protect in Easement	0	0	0	0	0	0
Enhance	0	0	0	0	0	0
Total	0	0	0	411	0	411

Table 4. Total Requested Funding within each Ecological Section

Type	Metro/Urban	Forest/Prairie	SEForest	Prairie	Northern Forest	Total
Restore	\$0	\$0	\$0	\$461,500	\$0	\$461,500
Protect in Fee with State PILT Liability	\$0	\$0	\$0	\$2,911,000	\$0	\$2,911,000
Protect in Fee W/O State PILT Liability	\$0	\$0	\$0	\$0	\$0	\$0
Protect in Easement	\$0	\$0	\$0	\$0	\$0	\$0
Enhance	\$0	\$0	\$0	\$0	\$0	\$0
Total	\$0	\$0	\$0	\$3,372,500	\$0	\$3,372,500

Table 5. Average Cost per Acre by Resource Type

Type	Wetlands	Prairies	Forest	Habitats
Restore	\$0	\$0	\$0	\$0
Protect in Fee with State PILT Liability	\$8,600	\$10,502	\$0	\$2,700
Protect in Fee W/O State PILT Liability	\$0	\$0	\$0	\$0
Protect in Easement	\$0	\$0	\$0	\$0
Enhance	\$0	\$0	\$0	\$0

Table 6. Average Cost per Acre by Ecological Section

Type	Metro/Urban	Forest/Prairie	SE Forest	Prairie	Northern Forest
Restore	\$0	\$0	\$0	\$0	\$0
Protect in Fee with State PILT Liability	\$0	\$0	\$0	\$7,083	\$0
Protect in Fee W/O State PILT Liability	\$0	\$0	\$0	\$0	\$0
Protect in Easement	\$0	\$0	\$0	\$0	\$0
Enhance	\$0	\$0	\$0	\$0	\$0

Target Lake/Stream/River Feet or Miles

5

Parcel List

Section 1 - Restore / Enhance Parcel List

No parcels with an activity type restore or enhance.

Section 2 - Protect Parcel List

Martin

Name	TRDS	Acres	Est Cost	Existing Protection?	Hunting?	Fishing?
Caron WMA #1	10133123	139	\$1,210,800	No	Full	Not Applicable
Island WMA #1	10130104	112	\$711,600	No	Full	Not Applicable
Island WMA #2	10231233	60	\$503,500	No	Full	Not Applicable
Island WMA #3	10131120	100	\$946,600	No	Full	Not Applicable

Section 2a - Protect Parcel with Bldgs

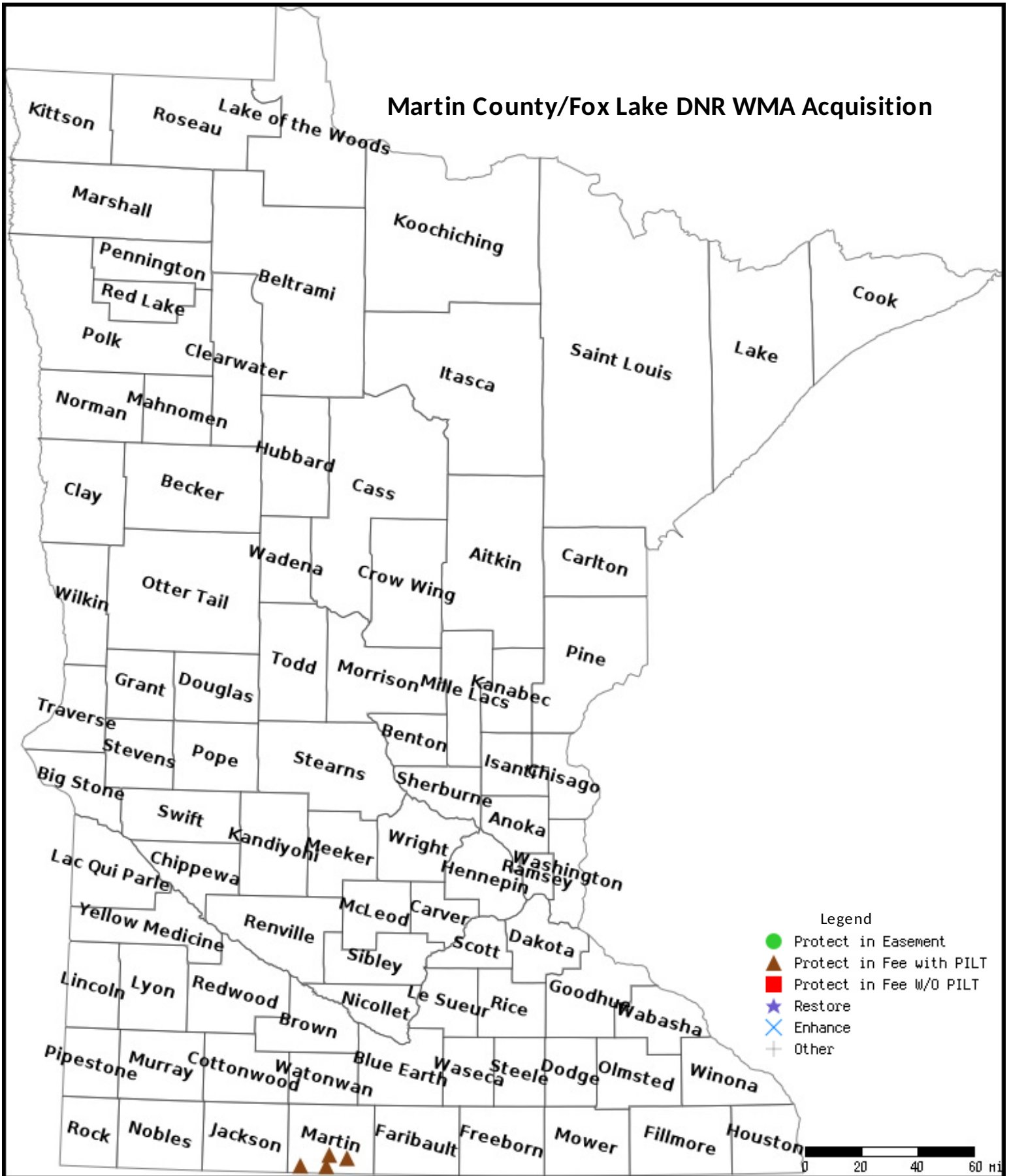
No parcels with an activity type protect and has buildings.

Section 3 - Other Parcel Activity

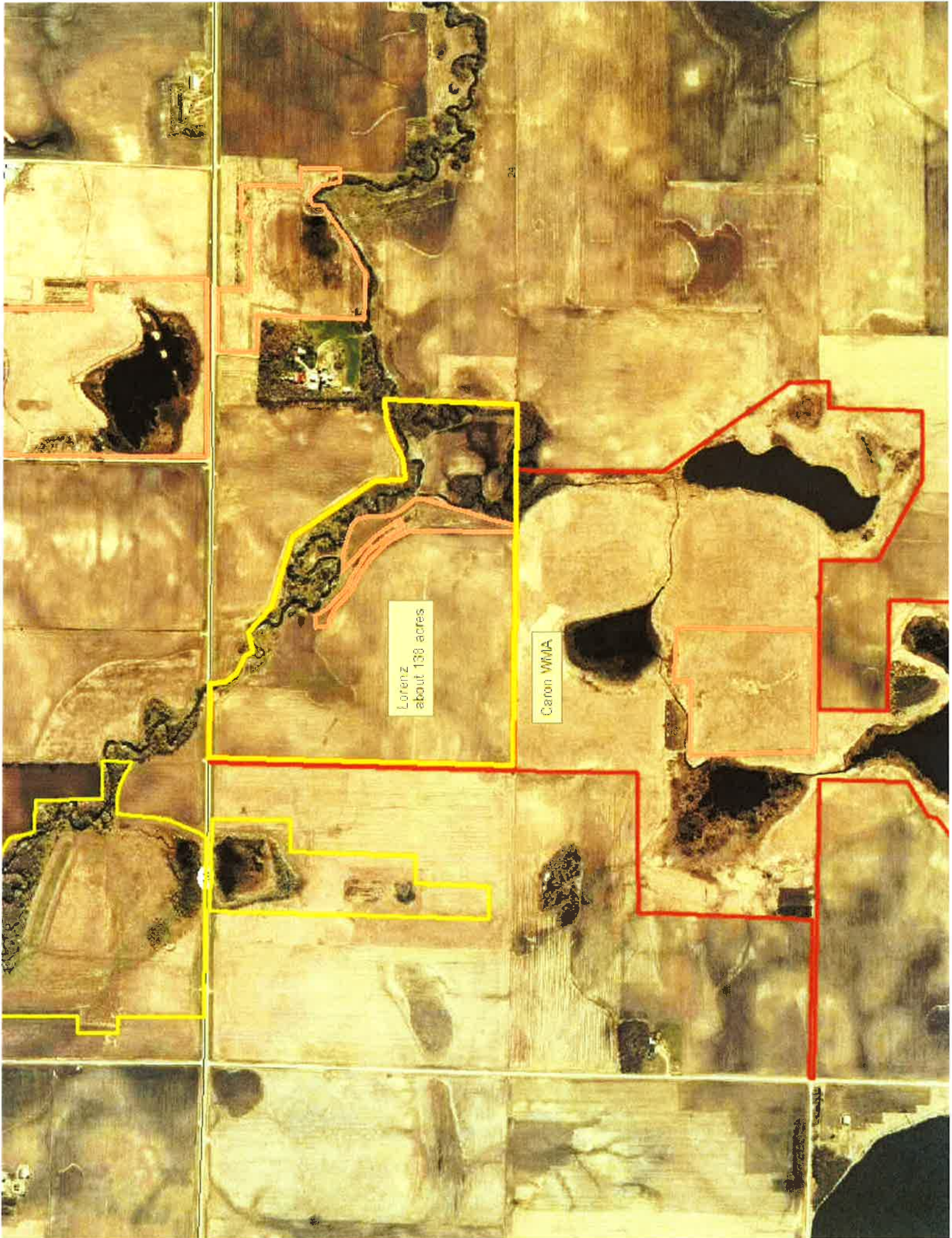
No parcels with an other activity type.

Parcel Map

Martin County/Fox Lake DNR WMA Acquisition

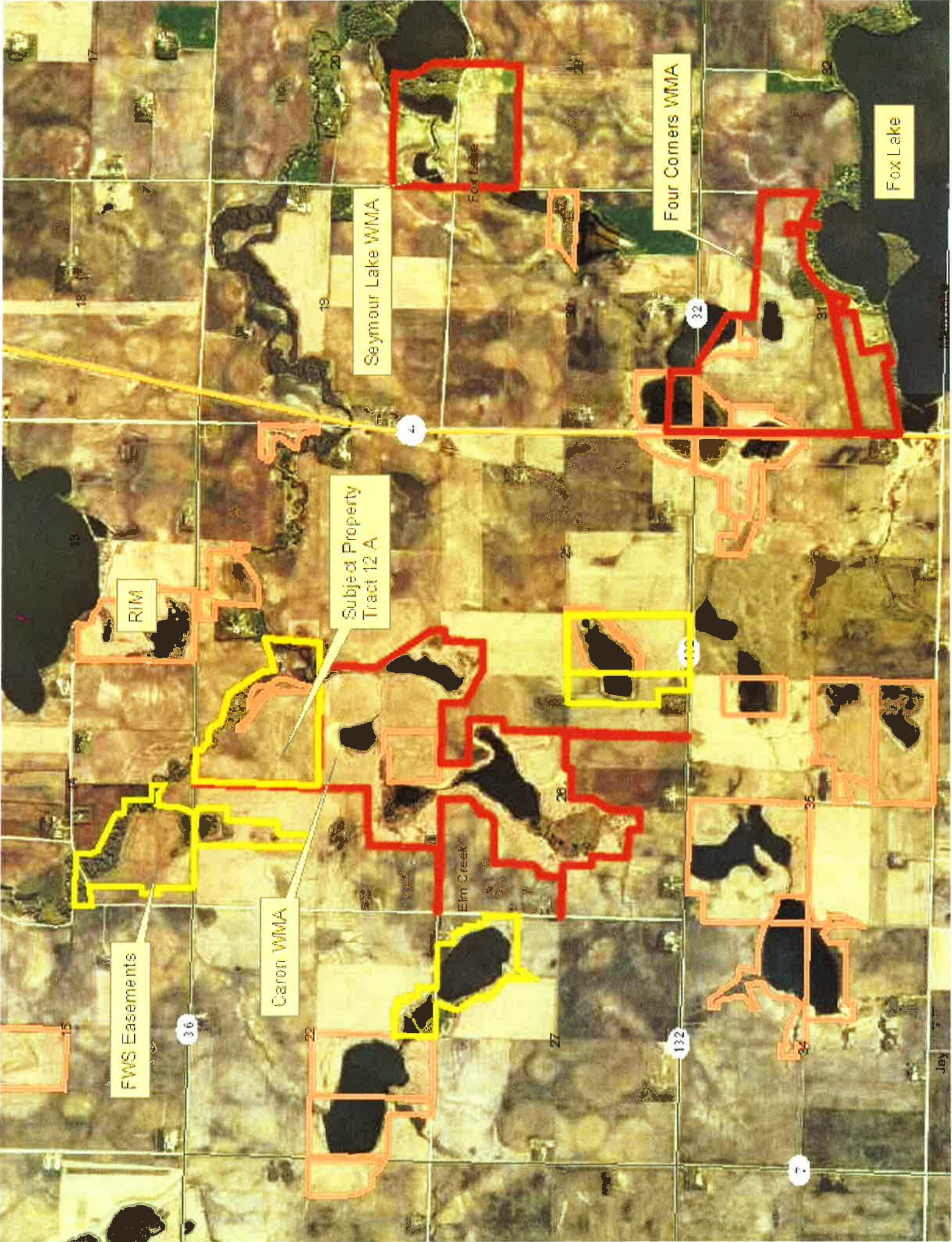


Data Generated From Parcel List



Lorenz
about 138 acres

Caron WMA



Seymour Lake WMA

Four Corners WMA

Fox Lake

Subject Property Tract 12 A

Caron WMA

FWS Easements

RIM

Elm Creek

36

132

32

18

17

19

25

26

27

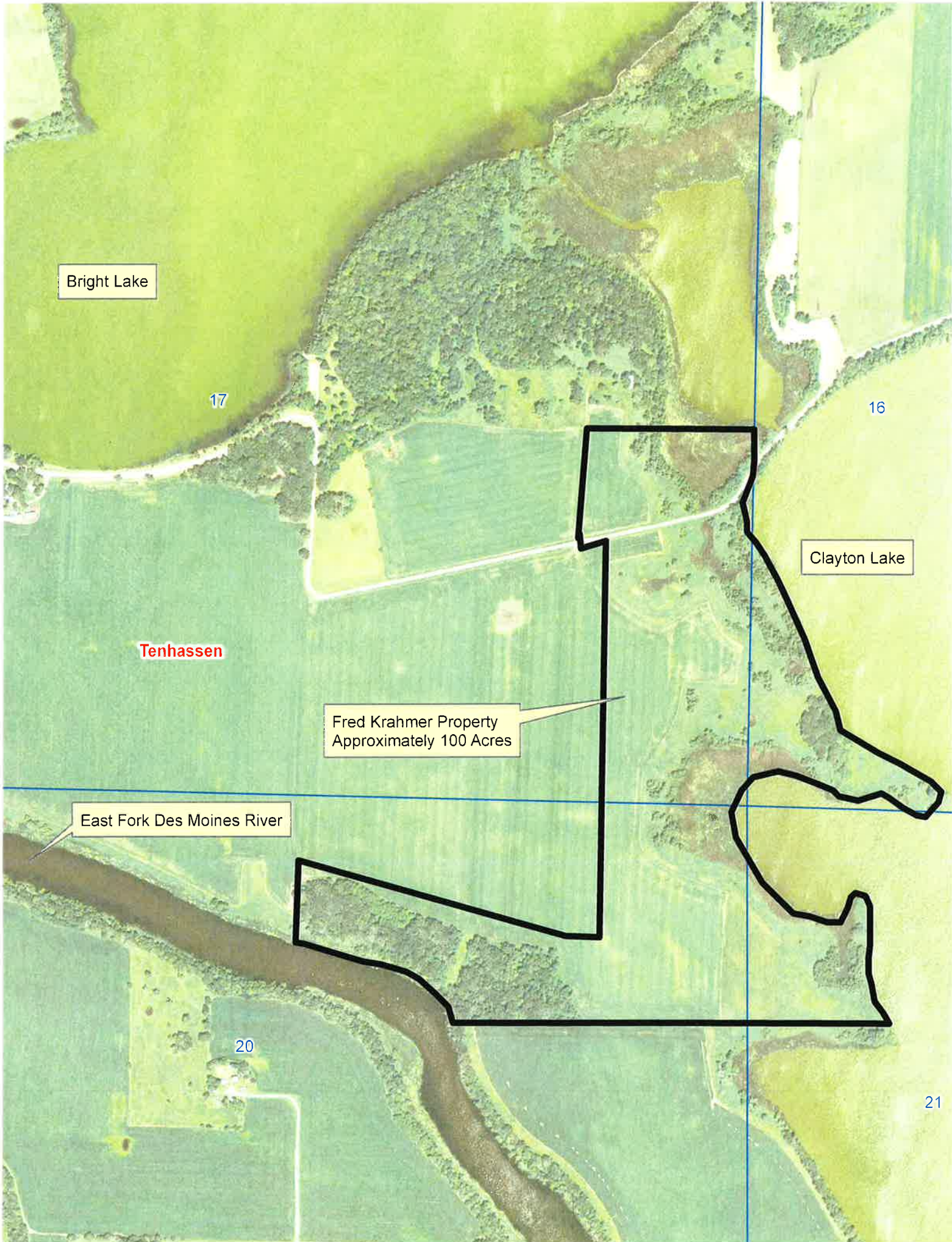
36

37

31

32

Jay



Bright Lake

17

16

Clayton Lake

Tenhassen

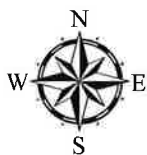
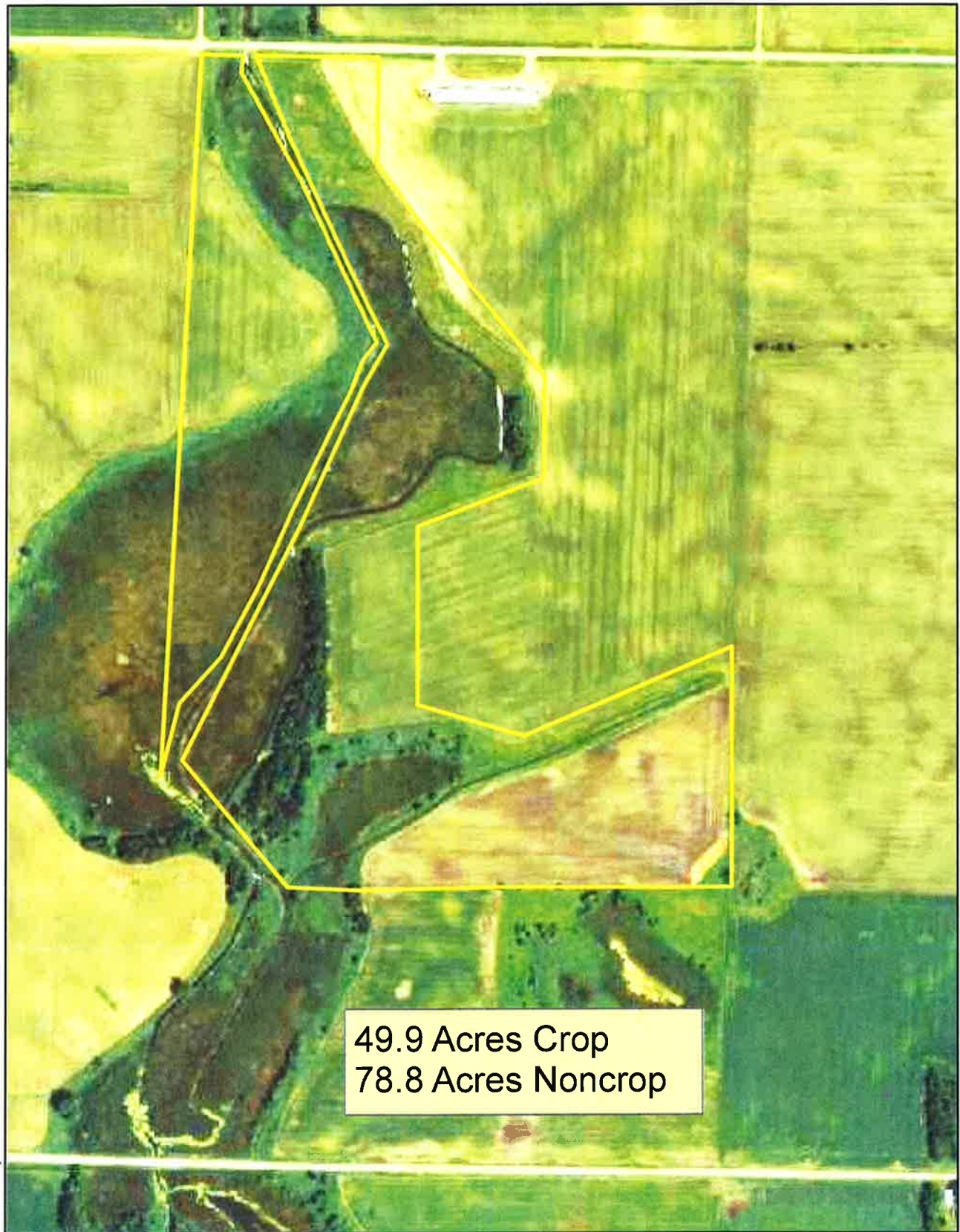
Fred Krahmer Property
Approximately 100 Acres

East Fork Des Moines River


20

21

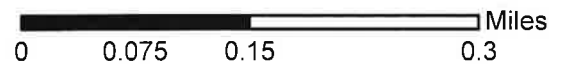
Krahmer Parcel Tenhassen Township Section 4



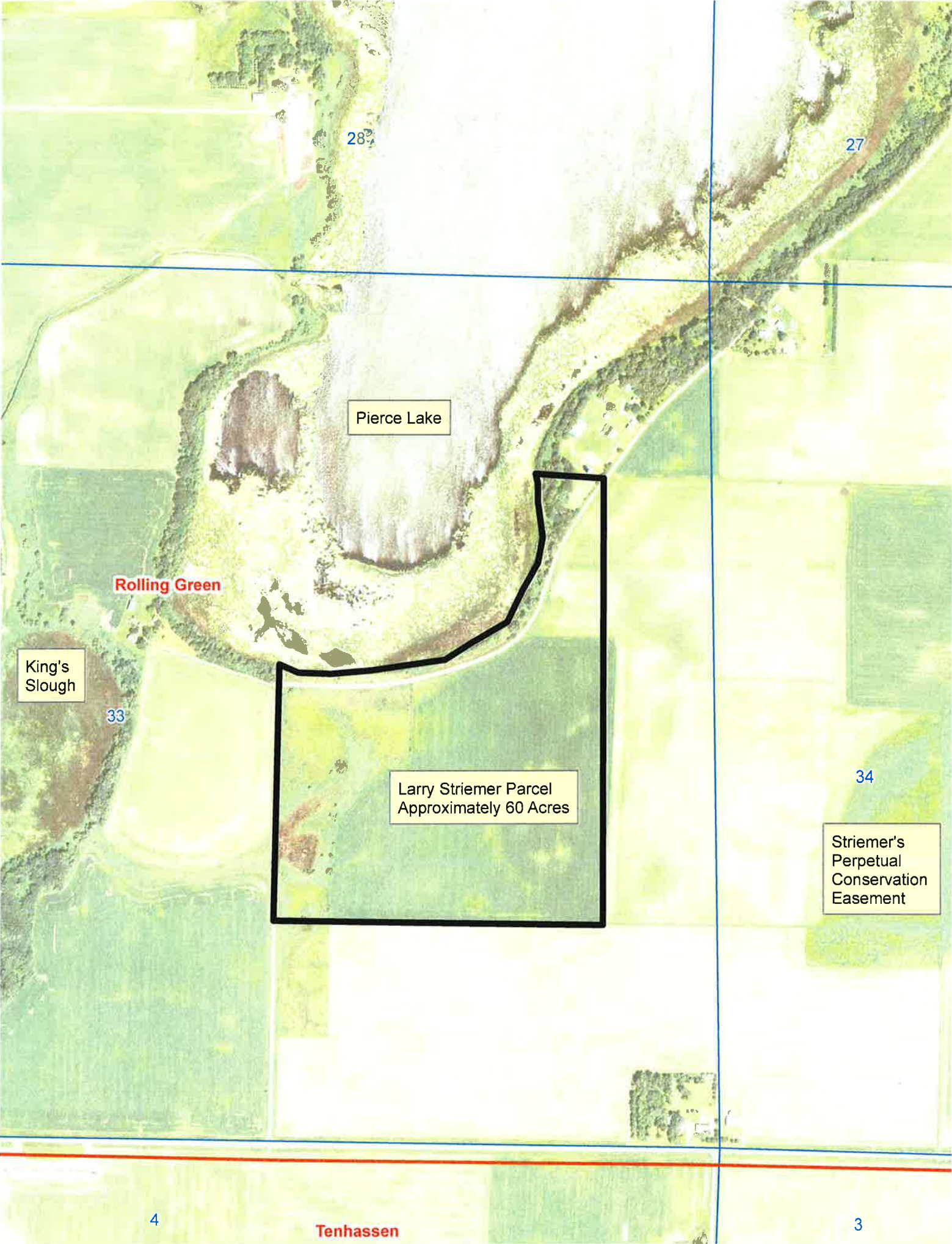
Legend

 Tenhassen_Project

Created by Martin SWCD, 2/13/15
2013 Imagery



1:8,000



28

27

Pierce Lake

Rolling Green

King's Slough

33

Larry Striemer Parcel
Approximately 60 Acres

34

Striemer's
Perpetual
Conservation
Easement

4

Tenhassen

3



MINNESOTA SOIL and WATER CONSERVATION DISTRICTS

Fox Lake Conservation League, Inc.
P. O. Box 212
Sherburn, MN 56171
June 4, 2015

TO: Tim Eisenmenger, President

RE: LSOHC Grant Application

Dear Tim:

The Martin SWCD extends its full support for your grant application to the Lessard-Sams Outdoor Heritage Council for the acquisition of high priority wildlife habitat.

The SWCD looks forward to continuing to partner with the Fox Lake Conservation League and the other members of the Martin County Conservation Alliance to put good quality conservation on the land. SWCD staff will provide technical support for prairie restoration using local ecotype native plant materials and technical support for wetland restorations.

The proposed acquisition projects are all in areas where a substantial amount of existing high quality wildlife habitat is protected by MN DNR owned wildlife management areas and perpetual conservation easements on private lands. Your proposal adds significantly to these habitat clusters.

Your proposal addresses the need for additional wildlife habitat that is called for in the Martin County Water Plan. It also addresses water quality issues, by adding buffers to several water bodies and providing water treatment in restored wetlands.

Again, the Martin SWCD will continue to provide the technical support needed to successfully implement your proposed project to acquire and restore several areas of high quality wildlife habitat that will provide multiple benefits to the county. We look forward to working with you on this incredible project.

Sincerely

A handwritten signature in blue ink that reads "Rich Perrine". The signature is written in a cursive, flowing style.

Rich Perrine
Technician, Water Plan/WCA

Minnesota Pheasants Forever
Martin County Chapter
1317 North State Street
Fairmont, MN 56031

Tim Eisenmenger, President
Fox Lake Conservation League
P. O. Box 212
Sherburn, MN 56171

June 4, 2015

Dear Tim,

RE: LSOHC Grant Application

Our Pheasants Forever – Martin County Chapter enthusiastically supports your LSOHC grant application. Your efforts to expand our local WMAs by adding adjacent marginal cropland and existing natural habitat is one of the primary goals of our Pheasants Chapter. The amount of public hunting land available in Martin County is nowhere near the amount needed to meet the need for any level of success with pheasant hunting or hunting in general.

The Martin County Pheasants Forever is available to provide cash and in-kind match as needed to assist the Fox Lake Conservation League in acquiring additional acres and improving the much needed wildlife habitat. These projects will add to the quality of hunting and other recreational activities that the new acres will provide in the future.

All of these projects will add much needed nesting as well as winter cover for pheasants and many other species of wildlife already using these areas. This project will benefit many game and non-game species.

We look forward to our continued partnership as we move forward on these and many other important habitat acquisition and restoration projects.

Good luck with your application. All of these projects are drastically needed.

Sincerely,

A handwritten signature in black ink that reads "Brian Poppe". The signature is written in a cursive style with a long horizontal flourish extending to the right.

Brian Poppe
President



MARTIN COUNTY CONSERVATION CLUB INC
1234 South State St
Fairmont MN 56031

June 4, 2015

To: Fox Lake Conservation League

RE: LSOHC Grant Application

The Martin County Conservation Club enthusiastically supports your efforts toward the acquisition of additional wildlife habitat adjacent to or near existing WMAs. The amount of public hunting land available in this area is not adequate to provide quality experiences to meet the demands of the current level of hunting pressure on local habitat.

The Martin County Conservation Club is available to provide cash and in-kind match if needed to assist the Fox Lake Conservation League in acquiring additional acres and improving the much needed wildlife habitat. These projects will add to the quality of hunting and other recreational activities that these new areas will provide in the future.

All of these projects will add significantly to existing clusters of high quality wildlife habitat, benefiting many game and nongame species as well.

We look forward to working with you on these important habitat acquisition and restoration projects.

Best wishes in acquiring the funding to complete all of your much needed proposed acquisitions.

Sincerely,

Bruce Moore
MCCCI President